

Slo-Close Plastic Ball Valves

LIST PRICE SHEET

This List Price Sheet is available in PDF format at www.colonialengineering.com

CATEGORY	DISCOUNT MULTIPLIER	EFFECTIVE October 19, 2009
PRICING SCH B		VPSC 1
PRICING SCH S		



Proven Performance Since 1982

CUSTOMER SERVICE: 6400 Corporate Ave., Portage, MI 49002, Toll-free Phone (800) 374 0234 or (269) 323 2495, Toll-free Fax (866) 879 5982 or (269) 323 0630, www.colonialengineering.com

SLO-CLOSE PLASTIC BALL VALVES

Patented thermoplastic gear driven operating nut rotates 360° to achieve a 90° turn of the ball. The result is slow closure and the elimination of water hammer, while maintaining the positive shut-off and reliable service of a ball valve. Components and internal gears of the Slo-Close system are molded of durable Acetal material, and the Set screw is 316 SS. The system is mounted on Colonial's Full Block True Union Ball Valve, and Super C Sch 80 Compact Valve, both of which have a proven record of quality in industrial process piping, water treatment, commercial plumbing and irrigation markets for over 30 years.

Valve can be actuated by use of a standard Champion Sprinkler Key, or Lasco Valve Key (See page 2). Successfully introduced to the Turf Irrigation market in isolation valve applications, the Slo-Close valve will perform in any industry where the avoidance of water hammer is a priority. **Do not use for throttling (in partially open position).**

Line item detail is listed below. Contact customer service for discounts.

LASCO Fittings, Inc. (731) 772-3180
414 Morgan Street (800) 776-2756
Brownsville, TN 38012 Fax: (731) 772-0835

NOTE: Master distribution of the Slo-Close Series for the irrigation industry is offered through:

SLO-CLOSE FULL BLOCK TRUE UNION BALL VALVES



Part No.	Size	Ctn. Qty.	List
PVC w/EPDM O-RINGS: Pricing Schedule S			
Socket End Connectors			
V10101N-SC	1	24	\$79.60
V14101N-SC	1-1/4	6	101.25
V17101N-SC	1-1/2	6	101.25
V20101N-SC	2	6	125.25
V27101N-SC	2-1/2	1	276.00
V30101N-SC	3	1	300.00
CPVC/ EPDM O-RINGS: Pricing Schedule S			
Socket End Connectors			
V10103N-SC	1	24	\$105.00
V14103N-SC	1-1/4	6	148.00
V17103N-SC	1-1/2	6	148.00
V20103N-SC	2	6	196.00
V27103N-SC	2-1/2	4	315.00
V30103N-SC	3	1	405.00

Part No.	Size	Ctn. Qty.	List
PVC w/VITON® O-RINGS: Pricing Schedule S			
V10102N-SC	1	24	\$86.75
V14102N-SC	1-1/4	6	109.50
V17102N-SC	1-1/2	6	109.50
V20102N-SC	2	6	135.00
V27102N-SC	2-1/2	4	385.00
V30102N-SC	3	1	415.00
CPVC w/VITON® O-RINGS: Pricing Schedule S			
V10104N-SC	1	24	\$114.00
V14104N-SC	1-1/4	6	164.20
V17104N-SC	1-1/2	6	164.20
V20104N-SC	2	6	220.15
V27104N-SC	2-1/2	4	420.00
V30104N-SC	3	1	595.00

SLO-CLOSE FULL BLOCK TUBV WITH HDPE SPIGOT DR11 END CONNECTORS



HDPE DR11 End Pieces are custom designed and molded for Colonial Full Block TUBV of HDPE 3408 material. They are to be joined to HDPE pipe using standard butt fusion equipment, electro-fusion couplings, or compression adapters, following equipment manufacturer's recommendations.

This valve is not suitable for butt fusion in a section of HDPE pipe that exceeds 24" in length due to thermal expansion and contraction of HDPE. It is designed to be connected to a directional-changing fitting.

Part No.	Size	Ctn. Qty.	List
PVC w/ EPDM O-rings. HDPE x HDPE End pcs.:			
Pricing Schedule S			
V20101HD-SC	2	6	\$163.00
V30101HD-SC	3	1	340.00
PVC w/ EPDM O-rings. HDPE x PVC End pcs.			
(Includes 1 HDPE end pc, 1 PVC Soc end pc.)			
V20101HP-SC	2	6	\$158.00
V30101HP-SC	3	1	335.00
CPVC/EPDM O-rings. HDPE x HDPE End pcs.			
V20103HD-SC	2	6	\$232.00
V30103HD-SC	3	1	430.00
CPVC/EPDM O-rings. HDPE x PVC End pcs.			
(Includes 1 HDPE end pc, 1 PVC Soc end pc.)			
V20103HP-SC	2	6	\$227.00
V30103HP-SC	3	1	425.00
HDPE End Connector Replacement			
Pricing Schedule B			
K26013	2	1	\$12.65
K26014-1	3	1	18.00

Part No.	Size	Ctn. Qty.	List
PVC w/ Viton® O-rings. HDPE x HDPE End pcs.:			
Pricing Schedule S			
V20102HD-SC	2	6	\$188.00
V30102HD-SC	3	1	470.00
PVC w/ Viton® O-rings. HDPE x PVC End pcs.			
(Includes 1 HDPE end pc, 1 PVC Soc end pc.)			
V20102HP-SC	2	6	\$183.00
V30102HP-SC	3	1	465.00
CPVC w/ Viton® O-rings. HDPE x HDPE End pcs.			
V20104HD-SC	2	6	\$256.00
V30104HD-SC	3	1	645.00
CPVC w/ Viton® O-rings. HDPE x PVC End pcs.			
(Includes 1 HDPE end pc, 1 PVC Soc end pc.)			
V20104HP-SC	2	6	\$251.00
V30104HP-SC	3	1	641.00

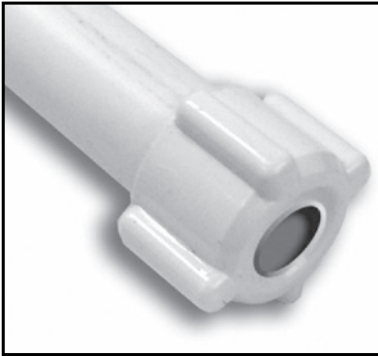
Pressure ratings are for non-shock water at 73°F.

SLO-CLOSE SUPER "C"™ COMPACT VALVE



Part No.	Size	Ctn. Qty.	List
PVC w/EPDM O-Rings: Pricing Schedule S			
V20191N-SC SXS	2	18	\$78.00

VALVE KEY FOR USE WITH SLO-CLOSE VALVES



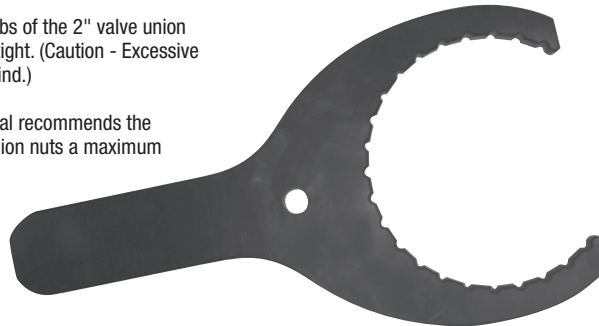
Part No.	Ctn. Qty.	List
Pricing Schedule B		
VKey-1	10	\$2.08
*pipe not included.		

A unique 3/4" cap and a 3/4" tee provides the makings of a specially designed PVC version of a sprinkler key for use with Slo-Close Valves. By buying the kit (includes tee and cap) and adding pipe*, you can create the perfect key length to reach each valve. Cost efficient and super easy!

WRENCH FOR 2" VALVE UNION NUTS

This wrench fits securely over the ribs of the 2" valve union nut to enable tightening past hand-tight. (Caution - Excessive tightening may cause the valve to bind.)

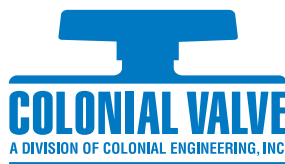
Note: For 2-1/2 and 3" SCVs, Colonial recommends the use of a strap wrench to turn the union nuts a maximum of 1/4-turn past hand tight.



Part No.	Ctn. Qty.	List
PVC Wrench Pricing Schedule B		
V20W-PVC	1	\$55.00
Aluminum Wrench Pricing Schedule B		
V20W	1	\$140.00

RECOMMENDATIONS TO INSTALLERS AND USERS

Plastic piping systems should be engineered, installed, operated and maintained in accordance with accepted standards and procedures. Suitability for the intended application should be determined and verified by the designer and/or installer. Prior to assembly, all piping components should be inspected for damage or irregularities, and for the proper fit of mating components. The published instructions of the manufacturers of all attributes of the piping system (including but not limited to: pipe, fittings, valves, solvent cement & primer, thread sealant or Teflon tape) must be followed. All design, installation, operation and maintenance personnel must be trained on the proper precautions, use, handling, and installation of thermoplastic piping systems prior to use. A NOTE ON VALVE SELECTION: Ball Valves are designed for On/Off service and are NOT SUITABLE for throttling in a semi-closed position. Butterfly Valves ARE SUITABLE for both throttling and for On/Off service.



Product drawings and/or photographs are representative and may not fully show product configurations. Please visit our website to view current PDF catalog sheets for each valve category.

Pressure ratings are for non-shock water at 73°F.

CUSTOMER SERVICE: 6400 Corporate Ave., Portage, MI 49002, Toll-free Phone (800) 374 0234 or (269) 323 2495, Toll-free Fax (866) 879 5982 or (269) 323 0630, www.colonialengineering.com