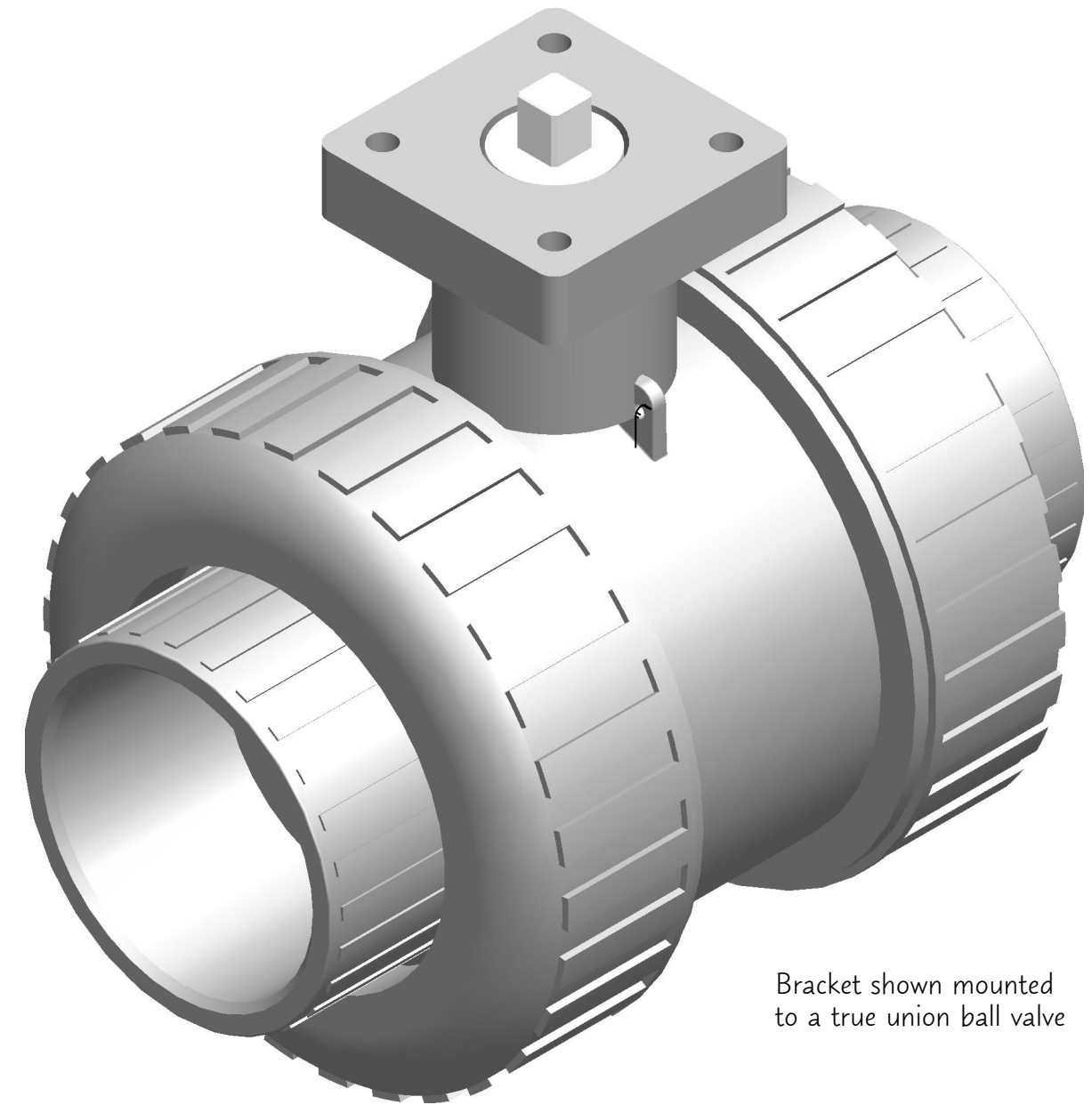
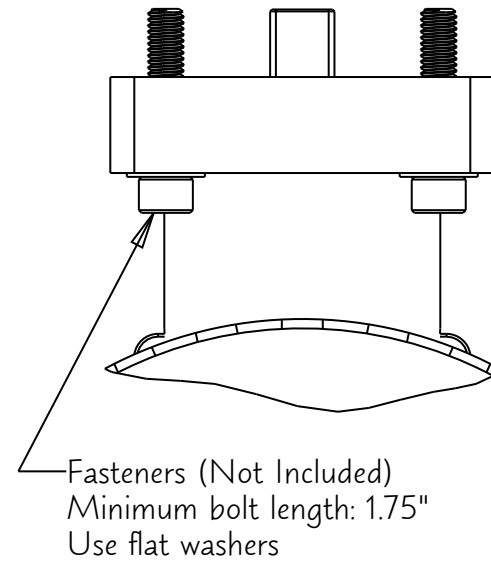
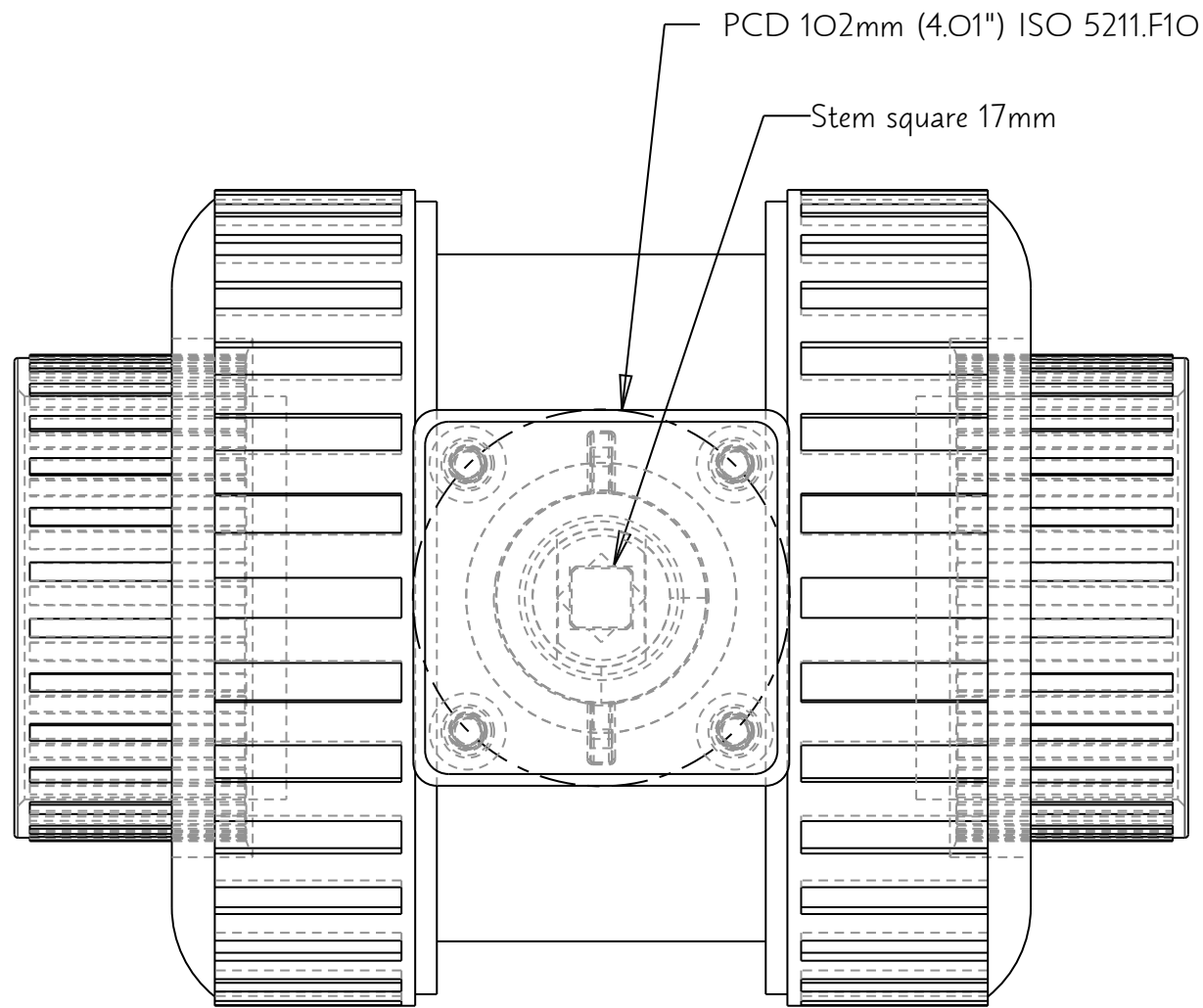


CUSTOMER PART NO:  
-



Bracket shown mounted to a true union ball valve

## PEDESTAL TYPE ACTUATOR MOUNTING BRACKET FOR 3" & 4" COLONIAL FULL BLOCK® TRUE UNION BALL VALVES

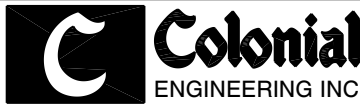
Constructed of PVC material, this bracket features a mounting pad with a PCD of 102mm (ISO 5211 F10), and a 17mm square stem coupling. The valve and mounting bracket are ordered separately, but will be shipped pre-assembled. The bracket is solvent-cemented to the valve at the factory, for a permanent, durable assembly.

The PVC mounting kit is suitable for use on both PVC and CPVC valves, providing that the atmospheric temperature (on the exterior of the valve) does not exceed 120 degrees. It is designed only for vertical installation (valve stem / actuator facing UP), not for horizontal (valve stem/actuator facing to the side) applications.

Part numbers for pedestal-style mounting brackets:  
(Includes bracket and stem coupling. Fasteners are not included.)

	Part No
To fit 3" valve	V30501P
To fit 4" valve	V40501P

(Order valve and bracket separately. Bracket will be permanently installed on the valve prior to shipping).

TITLE PEDESTAL-TYPE ACTUATOR MOUNT FOR 3" & 4" TUBV		 <b>Colonial</b> ENGINEERING INC.
DESIGNED BY MB	DWG SIZE B	
DRAWN BY EJL	SHEET NO 1 OF 1	<small>COLONIAL ENGINEERING, INC. 6400 Corporate Ave Portage, MI 49002</small> <small>This drawing is the property of Colonial Engineering. It is furnished to you for confidential information purposes only and is not to be disclosed to anyone else or reproduced or used for manufacturing purposes without the express written permission of Colonial Engineering.</small>
REVIEWED BY MB	SCALE 1/2	
DATE 12-26-11	LENGTH UNITS INCH	DRAWING NO <b>K11080</b>